

Cerlic

CTX20/50

Optical Consistency Meter 2" Flow-thru Design



- **Easy to use**
Self-instructing menu
Zero calibrate with water
One point calibration
- **Low maintenance**
Self-cleaning design
No moving parts
- **Wide measuring range**
0.001% to 5% consistency
10 to 50,000 ppm
- **Plug & Play**
Pre-calibrated for quick start-up

The CTX 20/50 by-pass Consistency Sensor

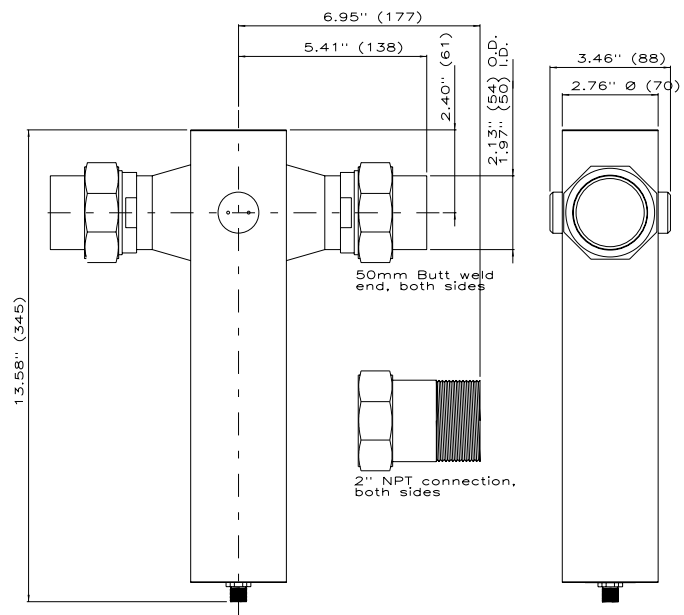
is developed to measure stock consistency or suspended solids in liquids. The **CTX** sensor is used to continuously measure fibers and particles that are greater than 0.88 microns, such as stock from 0.01% (100ppm) to 5%, WWTP influent, fiber losses in sewers, etc.

The **CTX 20/50** is constructed of 316SS with sapphire lenses and supplied with 2" npt couplings. The measuring principle is based on the ability of suspended particles to absorb and reflect NIR-light (near infrared), which is pulsed at 880 nm.

The sensor has a 20 mm gap between the lenses, which produces a self-cleaning effect due to the increased velocity. The sensor is precalibrated for quick and easy start-up. After installation, one-point adjustment is performed against a laboratory test. The **BB2** control box has four selectable calibration curves for applications with varying furnishes. Two **CTX** sensors, (or other sensors in the X-series) may be connected to a single **BB2** control box, which provides two 4-20mA outputs. The **BB2** box is built with the ability to add an interface board that allows connection to a field-bus.

Technical Specifications

Material	316SS (2343)
Weight w/ cable	3,7 kg (8.1 lbs)
Mounting	2" npt connections
Pressure rating	PN25 (365 psig)
Light source	GaAs diode, 880nm
Connection	5-pin M12-contact
Cable	10 m (33 ft) length
Max run	100 m (330 ft) - 10 cables
Measuring range	
Min.	0-100 ppm
Max.	0-5% consistency
Flow rates	60 l/min (16 gpm)
Enclosure	IP 65 (NEMA 4X)
Ambient temp	0 ... +60 °C 32 ... 140 °F
Process temp	0 ... +90 °C (32 ... 194°F)



Cerlic's product line contains sensors for measuring and monitoring your process. Our instruments are used in municipal waste water & water treatment plants, industrial and pulp & paper process control. The development of our BB2 product line is the result of increasing demand for instrumentation that is reliable, accurate and durable.



P.O. Box 5084 SE-141 05 Huddinge Sweden
 Phone +46 8 501 694 00 Fax +46 8 501 694 29
 www.cerlic.com e-mail sales@cerlic.se